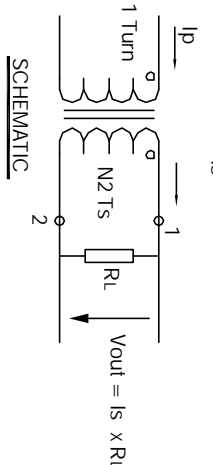


The information contained in this drawing is the sole property of CWS Coil Winding Specialist. Any reproduction in part or whole without written permission of CWS Coil Winding Specialist is prohibited.



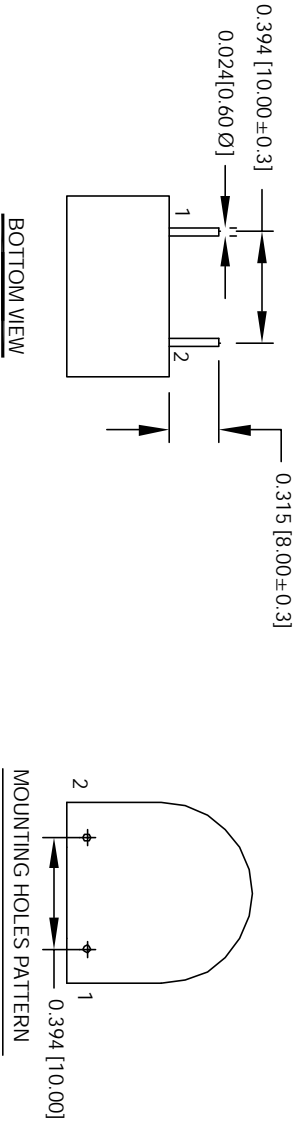
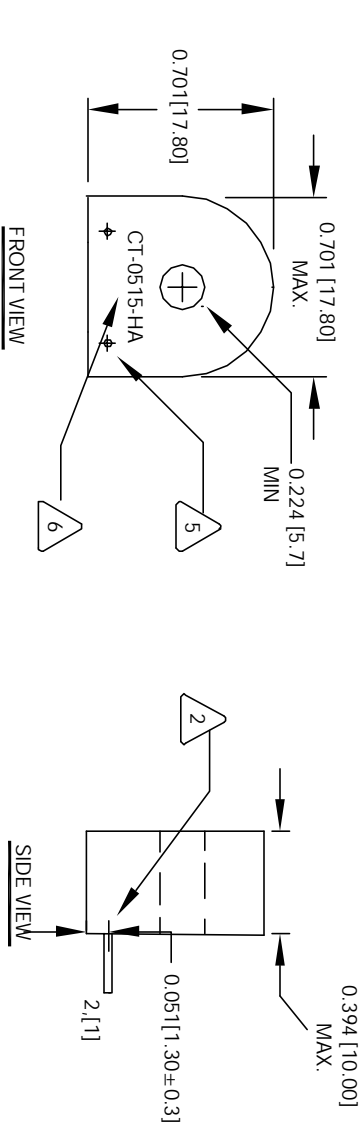
- 7 BUILT TO ROHS COMPLIANCE AND LEAD FREE. WHERE SHOWN
- 6 MARK PART NUMBER AND REVISION
- 5 REMOVE INSULATION, SOLDERED TO LEADS

- 4 CONSTRUCTION: ENCAPSULATED USING BOBBIN. OPERATING TEMP. = -25 °C TO 125 °C  
 OUTPUT VOLTAGE AT RL AND MAX (In) = 0.4 V RMS  
 BURDEN RESISTOR (RL) = 100 OHMS  
 DC RESISTANCE @ 25 °C = 25 OHMS MAX  
 MAX AMPLITUDE ERROR WITHIN RANGE OF (In) = ± 10%  
 ACCURACY CLASS = ± 10%  
 = 4 AMPS RMS MAX.  
 MAX AC PRIMARY CURRENT WITHOUT SATURATION (I max), = 2 AMPS RMS NOMINAL.  
 PRIMARY CURRENT RANGE WITH DEFINED ERROR TOLERANCES (In), SPECIFICATIONS @ 25 °C :

- 2 WIRE: UL RECOGNIZED 130 °C RATED MAGNET WIRE  
 CWS BYTE-MARK OR OTHER APPROVED PART  
 CORE: TAPE WOUND
  - 1 BOBBIN RATING CLASS B (130 °C) REQUIRED  
 MATERIAL: UL RECOGNIZED 94V-0 FOR FLAMMABILITY
- NOTES: UNLESS OTHERWISE SPECIFIED, 50/60 HZ CURRENT SENSOR.  
 UNIT: INCHES [MM]  
 READ FROM BOTTOM UP.

EP FORM0005 REV 3 10/01

REVISION HISTORY		SIGN & DATE	
REV	ECN	DESCRIPTION	DATE
C		PRODUCTION RELEASE	
		BR	DATE
		CHK	DATE
		BLN	3/12/07
		JLJU	3/12/07



QTY	CODE	IDENT	MFG. P/N	DESCRIPTION	ITEM NO.
	AUTOCAD	X			
	SOLIDWORKS				
	SIGN	DATE			
	DRAWN	BLN	3/12/07		
	DESIGN	JLJU	3/12/07		
	ENGR.	KSUM	3/12/07		
	APPR.	JLJU	3/12/07		
	SCALE	SIZE	DMG. NO.		
		B			
		2=1			

CAD-FILE:

DO NOT SCALE DRAWING

UNLESS OTHERWISE SPECIFIED	
DIMENSIONING AND TOLERANCE PER ANSI Y14.4M AND (DIMENSIONS ARE IN INCHES AND DIMENSIONS ARE IN MILLIMETERS)	
TOLERANCE INCHES: .XXX = ±.010 .XX = ±.020 TOLERANCE METERS: .XXX = ±.254 .XX = ±.51	±.0050
ANGLE PROJECTION	4=+0°30'

PARTS LIST		DESCRIPTION		ITEM NO.
COILS.COM, INC		CWS Coil Winding Specialist.		
WWW.COILS.COM		353 W. GROVE AVE		
		ORANGE, CA 92665		
TITLE:		50/60 Hz Current		
		Sense Transformer (AC)		
		CT-0515-HA		REV C
		SHEET 1 OF 1		